

SITE 01

DEVELOPMENT OF TOURISM RELATED
FACILITIES FOR SHRAVANABELAGOLA SITE AT
CHANNARAYAPATNA TALUK, HASSAN DISTRICT
UNDER THE CIRCUIT DEVELOPMENT FOR SOUTHERN
KARNATAKA (MYSURU – SRIRANGAPATTANA –
HASSAN – BELURU – HALEBIDU)

PROJECT INFORMATION MEMORANDUM



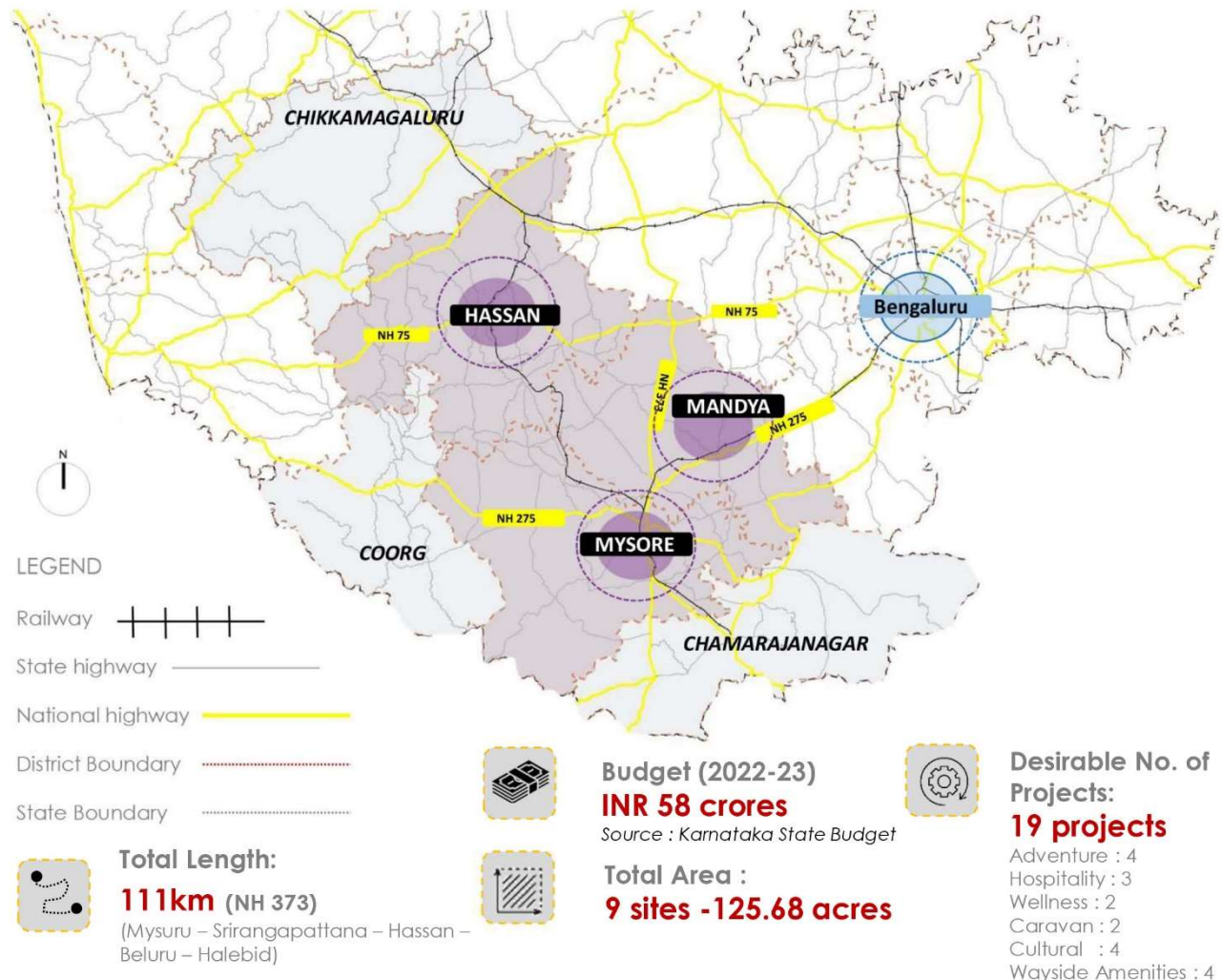
Project Information Memorandum

PROJECT BACKGROUND

Karnataka with its wide variety of tourism offerings such as beaches, hill stations, heritage monuments, national parks, wildlife sanctuaries etc. continues to be a prime tourism destination in India. Given the variety of tourism assets, the state is promoted under the tagline “One State, Many Worlds”. Department of Tourism, Government of Karnataka (the “DoT” or the “Client”) established in 1974, is vested with the responsibility to develop and promote Karnataka Tourism.

DoT intends to develop Tourist Infrastructure across sites in Circuit in Southern Karnataka (Mysuru – Srirangapattana – Hassan – Beluru – Halebidu) on PPP mode. The Karnataka State Budget 2022-23 has proposed for the development of Hampi – Badami – Aihole – Pattadakal – Vijayapura tourist circuit (North Circuit) and Mysuru – Srirangapatna – Hassan – Belur – Halebidu tourism circuit (South Circuit) to be developed under the PPP model to promote tourism. Development of the circuit is expected to converge with the support offered for tourism projects under the Karnataka Tourism Policy 2020-26.

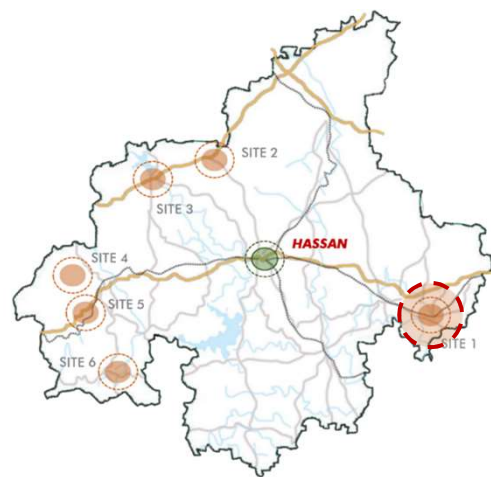
ABOUT SOUTHERN TOURISM CIRCUIT



Project Information Memorandum

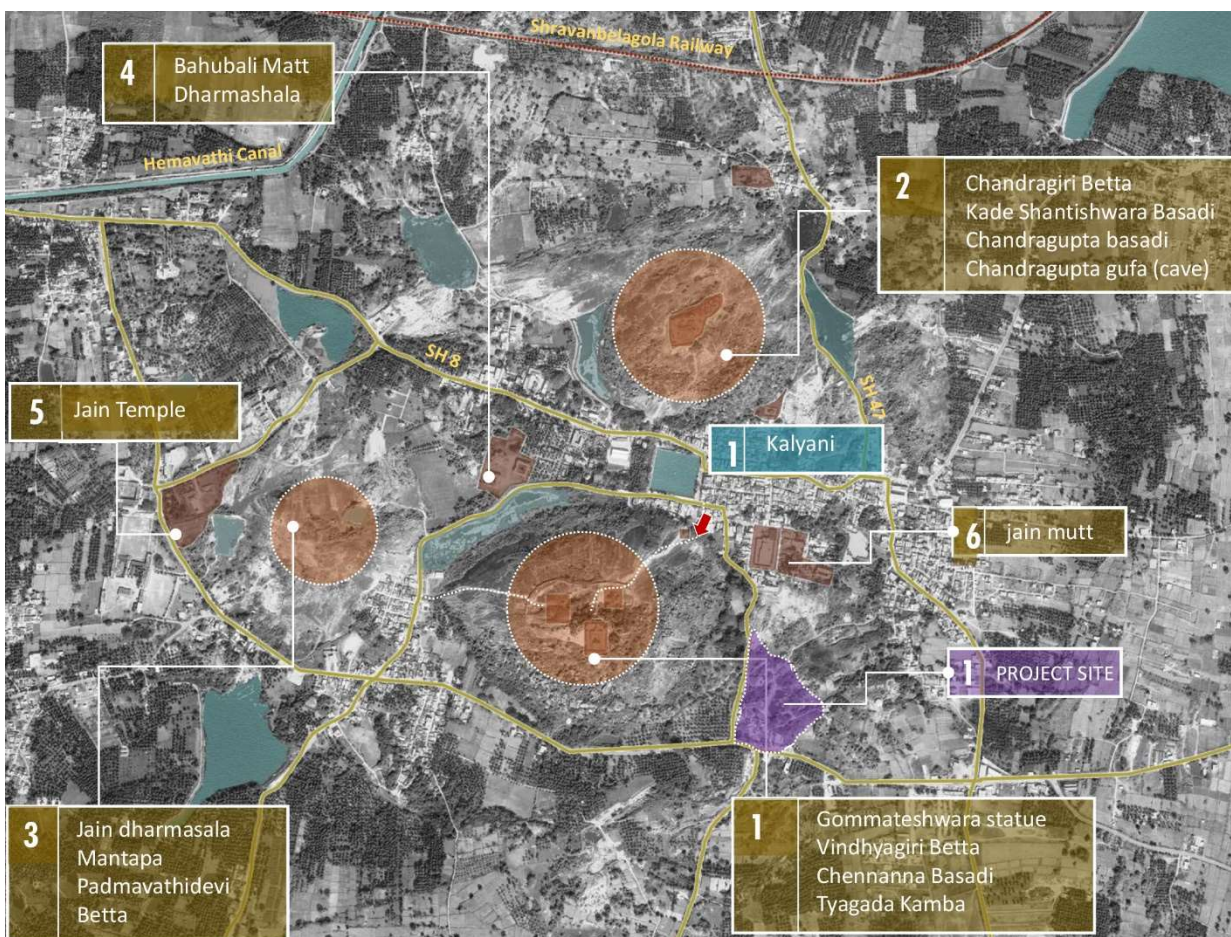
PROJECT SITE

- The site being located in the vicinity of the famous Gomateswara Temple, is assigned with components such Cultural Haat, Budget hotels and a designated parking lot with hop on hop off facilities to the temple in order to manage crowd and tackle parking challenges.
- These facilities are also clubbed with provisions for wayside amenities. Lake treatment and edge development is a part of the proposed development at site.



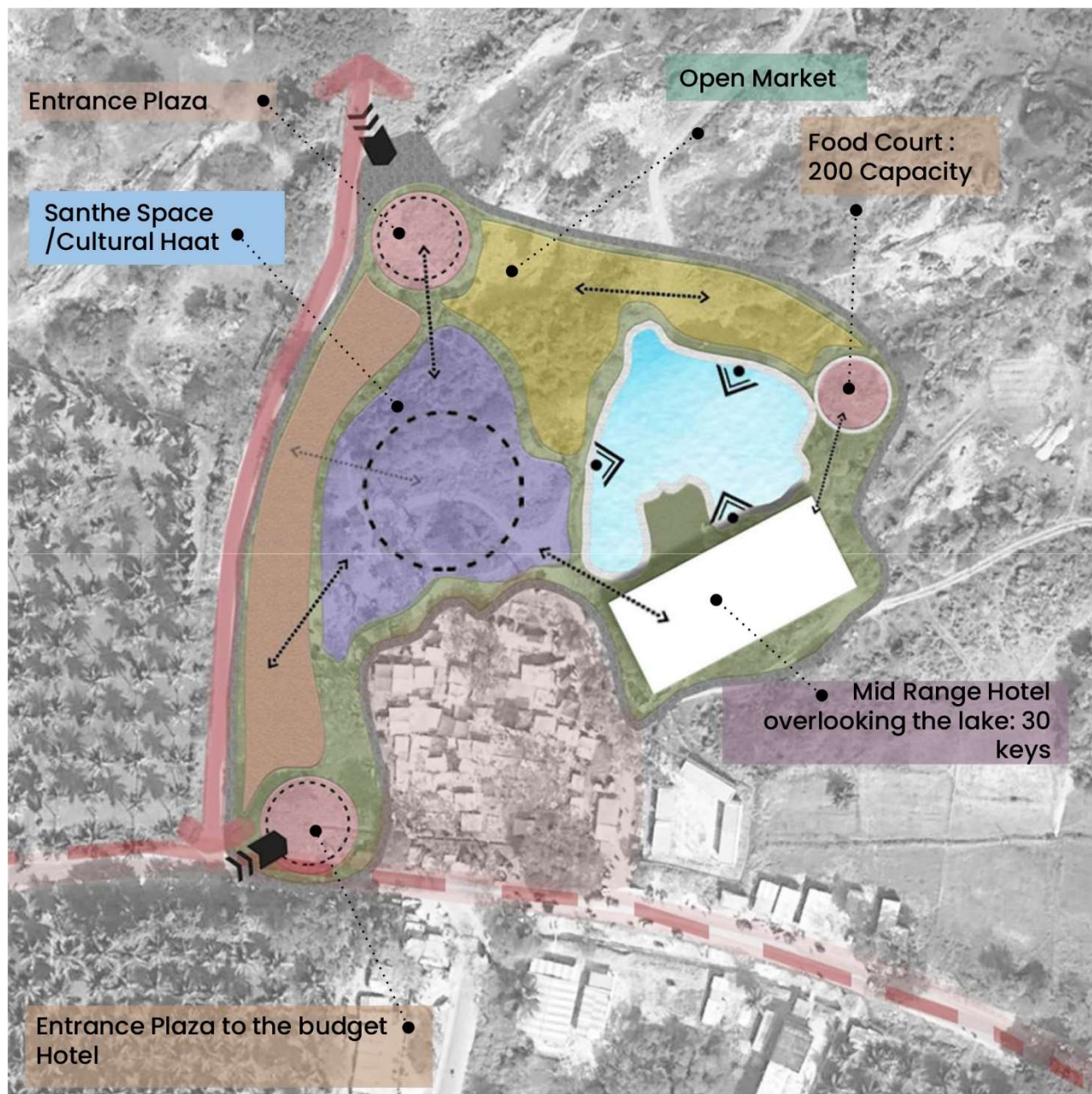
SITE	DETAILS
SITE AREA	4 acres
LOCATION	Shravanabelagola, Hassan
LAND OWNERSHIP	Department of Tourism, GoK

LOCATION AND CONNECTIVITY



Project Information Memorandum

CONCEPT MASTERPLAN



SITE POTENTIAL

Site	Cultural	Hospitality	Adventure	Wayside Amenities	Wellness
HASSAN					
SHRAVANABELAG OLA SITE	✓	✓		✓	

Project Information Memorandum

PROJECT COST

The total project landed cost is tentatively Rs 43.43 Cr

PROPOSED COMPONENTS

The components are :

- 1.Entrance Plaza
- 2.Santhe Space/Cultural Haat
3. Mid Range Hotel – 30 keys
- 4.Food Court
- 5.Open Market
- 6.Yatri Nivas



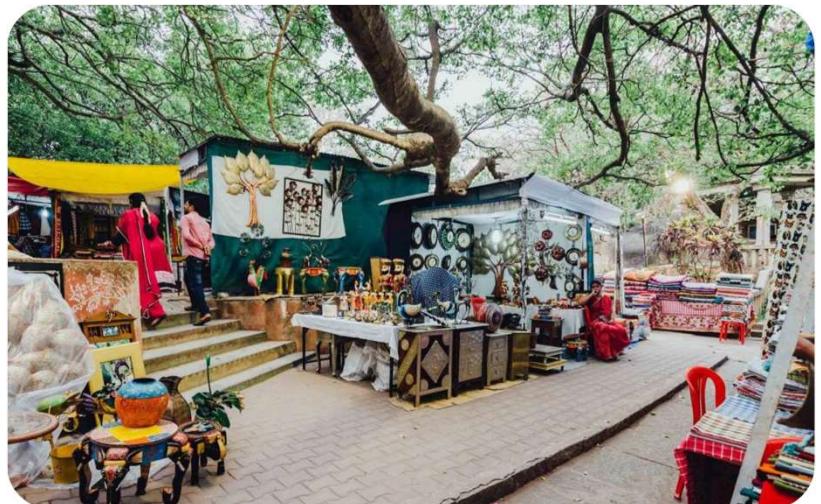
Cultural Haat



Santhe Space



Santhe Space



Santhe Space